



OPTIONS:  
COPPER BUS BOLT ON BREAKERS

WFS STD. SQUARE D NOOD  
CABINET: SURFACE MOUNT N-1  
RATING: 22,000 AC SERIES RATED  
SIZE: 125 A MCB

**KBA**  
Engineering, Inc.

Panel Name: M  
Voltage/Phase: 240 1 PH 3W

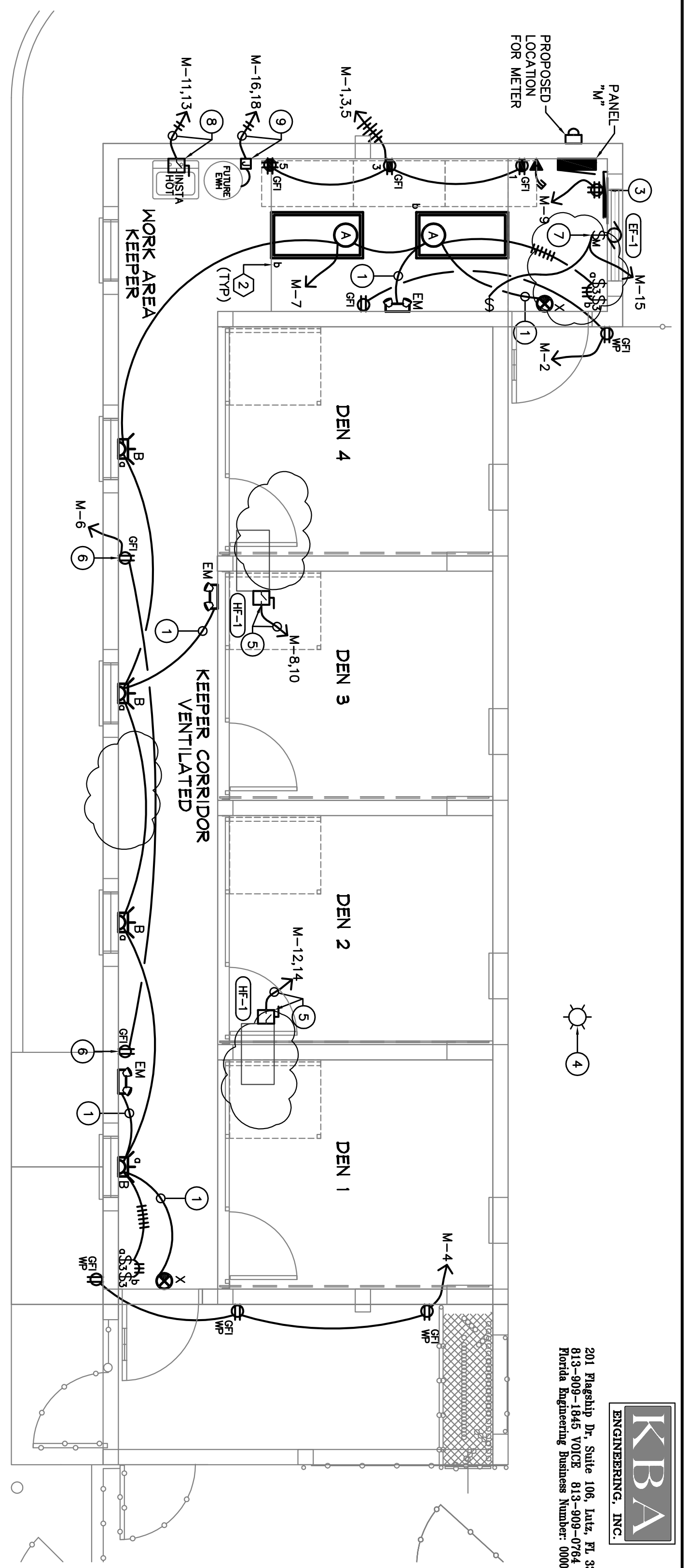
LOAD (VA)	LGFT	COOL	HEAT	REPT	MSC	panels	amps	LOCATION	LGFT	LGFT	LOCATION	amps	panels	LGFT	COOL	HEAT	REPT	MSC	LOAD (VA)
1000						1	20	WORK AREA	1	##	2	RCPTS	20	1					960
1000						1	20	WORK AREA	3	##	4	RCPTS	20	1					540
1000						1	20	WORK AREA	5	##	6	FANS	20	1					500
354						1	20	LIGHTS	7	##	8	HEATER	20	2					1850
380						1	20	TELEPHONE	9	##	10	3.3KW	20	2					1850
2750						2	30	NSTA-HOT	11	##	12	HEATER	20	2					1850
150						1	20	EF-1	13	##	14	3.3KW	20	2					1000
150						1	20	SPACE	17	##	18	EMH							1000
1						1	20	SPACE	19	##	0	20	SPACE						
1						1	20	SPACE	21	##	0	22	SPACE						
1						1	20	SPACE	23	##	0	24	SPACE						
1						1	20	SPACE	25	##	0	26	SPACE						
1						1	20	SPACE	27	##	0	28	TVSS						
1						1	20	SPACE	29	##	0	30							

CONNECTED LOAD SUMMARY (VA)	LGFT	COOL	HEAT	RECP	MSC	TOTALS	D.E.	COMMENTS	LOAD
PHASE A	0	0	0	0	0	354	1.25		443 VA
PHASE B	3300	3300	6800	100	100	354	1.25	USE HEAT LOAD FOR CALCULATION	0 VA
TOTALS	3300	3300	6800	100	100	708	2.50		6,600 VA
PHASE A	1020	0	0	0	0	1020	3.75		4,760 VA
PHASE B	930	0	0	0	0	930	3.38		7,650 VA
TOTALS	1950	0	0	0	0	1950	7.13		12,410 VA

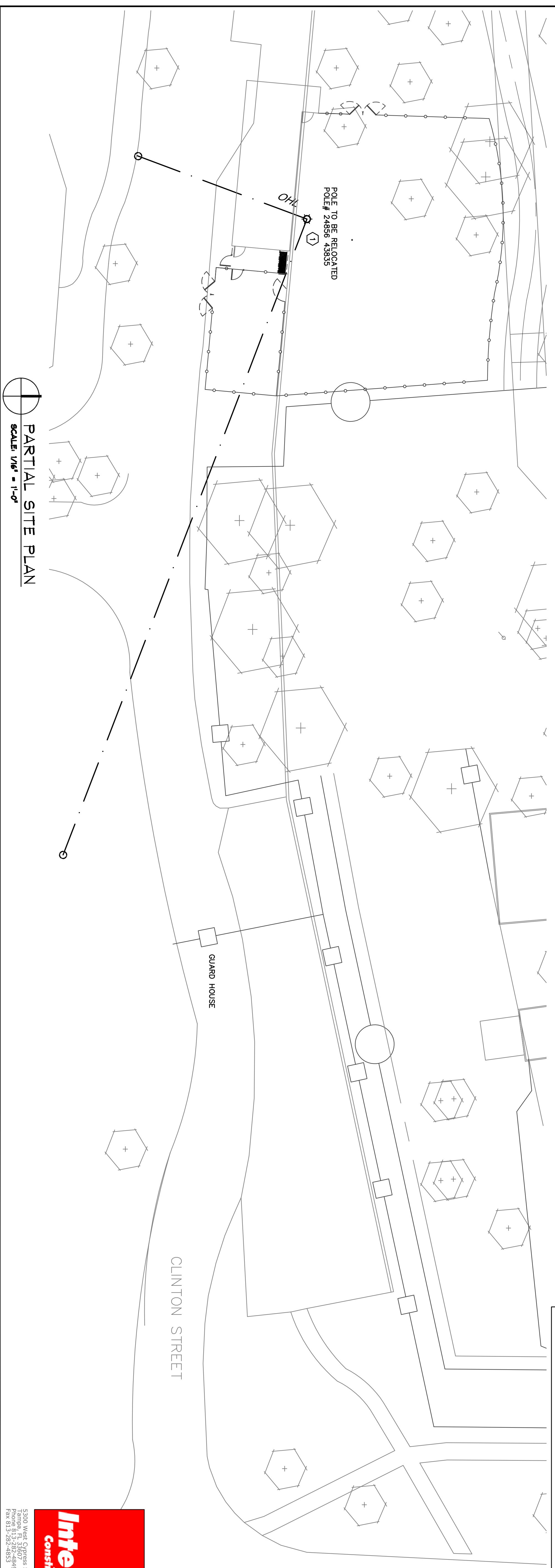
SYMBOL	DESCRIPTION	VOLTAGE	LAMPS	MOUNTING
A	2x4 CHAIN HUNG FIXTURE	120	3x32W-T8	CHAIN HUNG
B	WALL FLOOD LIGHT	120	1x42W-HFL	MOUNT @ 7'-6" A.F.F.
EM	EMERGENCY LIGHTING LIGHT/ULTRAVIOLET	120/277	VULUNT	MOUNT @ 7'-6" A.F.F.
X	LIGHT/ULTRAVIOLET	120	VULUNT	MOUNT @ 7'-6" A.F.F.

1) CONTRACTOR SHALL COORDINATE WITH LOCAL UTILITY COMPANY TO HAVE EXISTING OVERHEAD SERVICE CONDUCTORS AND POLE (# 24856 43835) RELOCATED TO ACCOMMODATE NEW BUILDING AND ENCLOSURE.

**POWER & LIGHTING PLAN**  
SCALE: 1/4" = 1'-0"



- ELECTRICAL DRAWING NOTES**
- CONNECT TO UNSWITCHED LEG OF LOCAL LIGHTING CIRCUIT.
  - LOWER CASE DENOTES SWITCHING CONTROL.
  - PROVIDE 3/4" PLYWOOD AS NEEDED FOR TELEPHONE BOARD. ALL SIDES OF BOARD TO BE PAINTED WITH NON-FLUORESCENT PINK PAIN. VERIFY MOUNTING HEIGHT WITH ARCHITECT BEFORE MOUNTING.
  - EXISTING POWER POLE TO BE RELOCATED. SEE PARTIAL SITE PLAN THIS SHEET FOR ADDITIONAL INFORMATION.
  - PROVIDE 30A/INF/2P/N1 DISCONNECT. CONNECT TO CIRCUIT SHOWN WITH (2) #12, (1) #10 E.G. - 1/2" C.
  - COORDINATE FAN MOUNTING HEIGHT WITH ARCHITECT BEFORE INSTALLING.
  - PROVIDE 20AMP MOTOR RATED TOGGLE SWITCH FOR EXHAUST FAN.
  - PROVIDE 30A/INF/2P/N1 DISCONNECT. CONNECT TO CIRCUIT SHOWN WITH (2) #10, (1) #10 E.G. - 1/2" C.
  - PROVIDE JUNCTION BOX FOR FUTURE ELECTRIC WATER HEATER. CONNECT TO CIRCUIT SHOWN WITH (2) #12, (1) #12 E.G. - 1/2" C.



**Integra**  
Construction Group

5310 Wood Orange Street - Suite 105  
Tampa, FL 33607  
Tel: 813-909-1845  
Fax: 813-909-4835

**KBA**  
ENGINEERING, INC.

201 Maghrip Dr. Suite 106, Lutz, FL 33549  
813-909-1845 VOIC 813-909-0744 FAX  
Florida Engineering Business Number: 06060330

**GARCIA SEUFERT ARCHITECT, INC.**  
ARCHITECTURAL DESIGN SERVICES

121 W. 122nd Ave TAMPA, FL 33612  
PHONE 813-915-8300  
FAX 813-915-0168  
FL REGISTRATION # AA26000767

**PROJECT NAME :**  
PROPOSED PATAS MONKEY EXHIBIT FOR:  
**LOWRY PARK ZOO**  
SLIGH AVENUE, TAMPA, FLORIDA

**SHEET CONTENT :**  
POWER & LIGHTING PLAN  
AND PARTIAL SITE PLAN

Kevin G. Carlson, PE  
FL REG. NO. TB0046062

**JOB NO. :**  
0989

**DRAWN/REVIEWED:**  
ELD/KC

**ISSUE DATE :**  
22 APR 2010

**REVISIONS**  $\Delta$

1 \_\_\_\_\_  
2 \_\_\_\_\_  
3 \_\_\_\_\_

**SHEET NUMBER**  
E-2