

SITE SUMMARY

EX IMPERVIOUS AREA REMOVED	
BUILDING	32 S.F.
PAVEMENT/WALKS	2,593 S.F.
TOTAL EX. IMPERVIOUS REMOVED	2,625 S.F.
PROP. IMPERVIOUS AREA ADDED	
BUILDING	935 S.F.
PAVEMENT/WALKS	637 S.F.
TOTAL PROP. IMPERVIOUS ADDED	1,572 S.F.
TOTAL EX. IMPERVIOUS REMOVED	
TOTAL PROP. IMPERVIOUS ADDED	2,625 S.F.
DIFFERENCE IN IMPERVIOUS AREA	1,053 S.F.

EXISTING TREE LEGEND

- ⊕ = BAY TREE
- ⊙ = BOTTLE BRUSH TREE
- ⊙ = CAMPHOR TREE
- ⊙ = CEDAR
- ⊙ = CHINA BERRY TREE
- ⊙ = CITRUS TREE
- ⊙ = OPRESS TREE
- ⊙ = EUCALYPTUS TREE
- ⊙ = MAGNOLIA TREE
- ⊙ = MAPLE TREE
- ⊙ = WALNUT TREE
- ⊙ = OAK TREE
- ⊙ = OTHER SPECIES
- ⊙ = PALM TREE
- ⊙ = PECAN TREE
- ⊙ = PEPSWON TREE
- ⊙ = PINE TREE
- ⊙ = Sycamore Tree
- ⊙ = WAX MYRTLE TREE
- ⊙ = WILLOW TREE

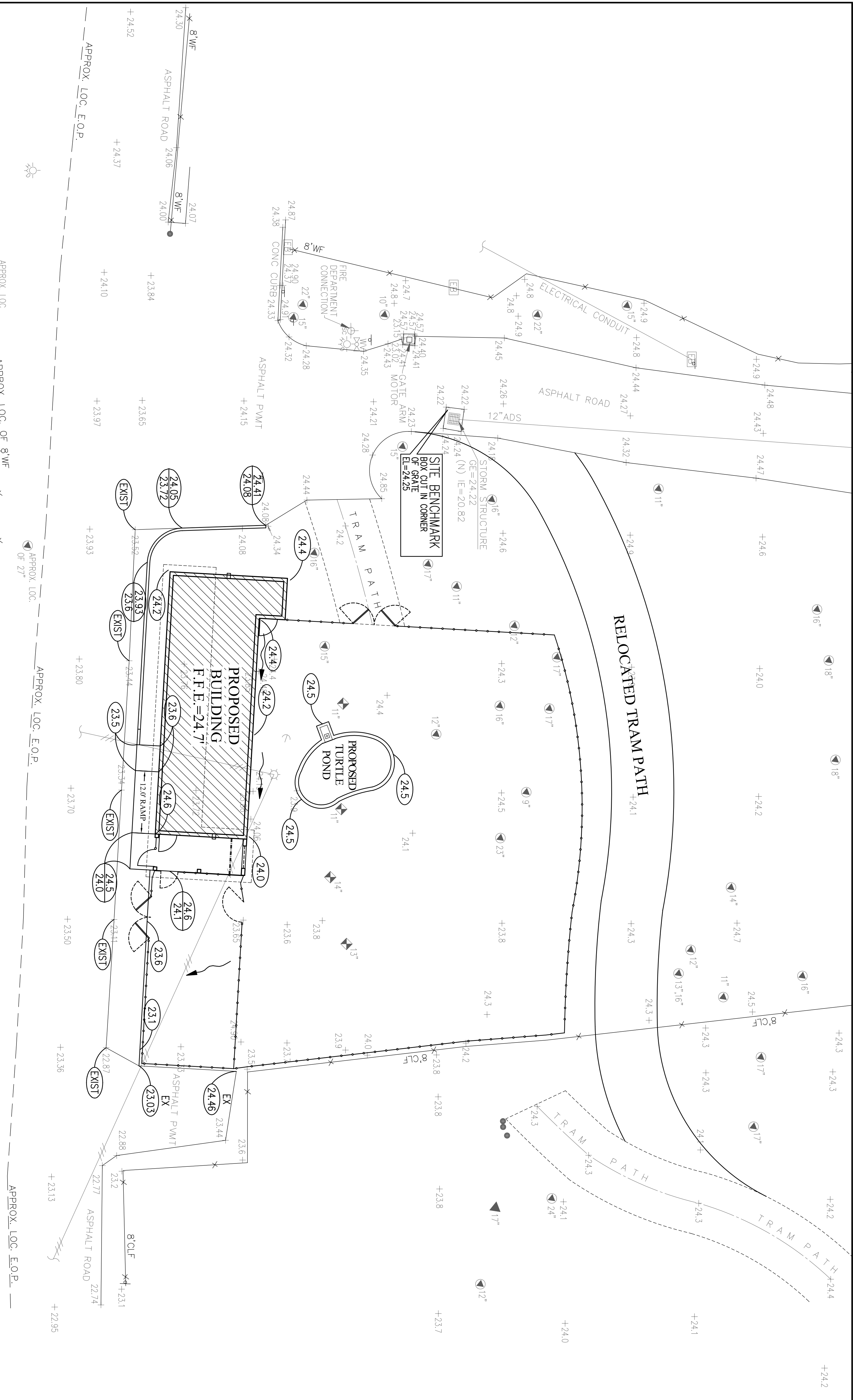
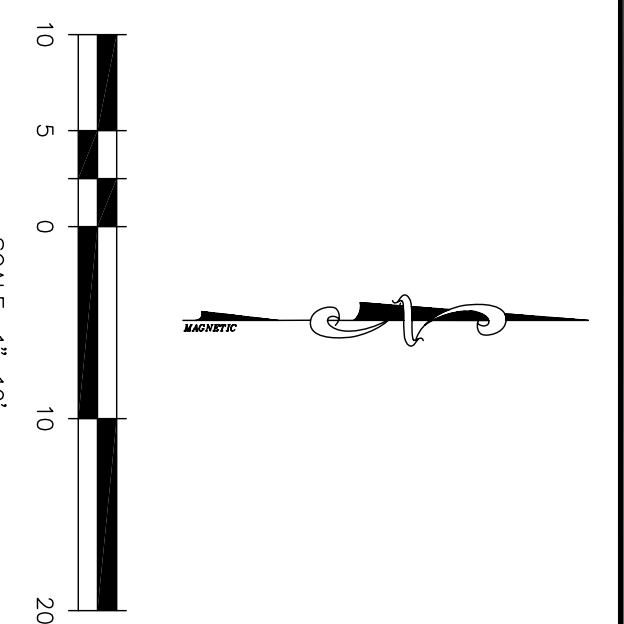
EXISTING SURVEY LEGEND

- = TOP OF BANK
- = 6" CHAIN LINK FENCE UNLESS OTHERWISE NOTED
- = OVERHEAD UTILITY LINES
- = APPROXIMATE LOCATION OF UNDERGROUND GAS LINE
- = APPROXIMATE LOCATION OF UNDERGROUND WATER MAIN
- = APPROXIMATE LOCATION OF UNDERGROUND RECLAIMED WATER LINE
- = APPROXIMATE LOCATION OF UNDERGROUND SANITARY SEWER LINE
- = APPROXIMATE LOCATION OF UNDERGROUND STORM SEWER LINE

SITE LEGEND

- ▭ = DENOTES PROPOSED CONCRETE WALKSPATHS
- ▭ = DENOTES PROPOSED ASPHALT PAVEMENT
- ▭ = DENOTES PROPOSED LANDSCAPE AREA

<p>FOR Intergra Construction Group 5300 West Cypress street Tampa, Florida 33607 Telephone No. (813) 286-9860</p>	<p>SITE PLAN</p> <p>PATAS MONKEY EXHIBIT LOWRY PARK ZOO</p>	<p>CHARLOTTE ENGINEERING & SURVEYING, INC. CIVIL ENGINEERS, SPORT FACILITIES CONSULTANTS & LAND DEVELOPMENT CONSULTANTS</p> <p>Tampa Office 5410 Mariner Street, Suite 125 Tampa, FL 33609 Telephone No. (813) 289-2599 Telephone No. (813) 289-5366 Fax No. (813) 289-5366 e-mail: cestampa@verizon.net</p> <p>EB No. 2904 LB No. 2904 LC No. 371</p>
<p>DATE: 4.28.10 SCALE: 1"=10' DRN. BY: KES CHK'D BY: DMV PROJ. # 12386-4</p>	<p>REVISIONS:</p>	<p>Daniel M. Vickstrom, P.E. P.E. No. 46090 State of Florida</p>
<p>Sheet C3</p>		



DRAINAGE SUMMARY

EX. IMPERVIOUS AREA REMOVED		
BUILDING	33 S.F.	0.000 AC.
PAVEMENT/WALKS	2,593 S.F.	0.060 AC.
TOTAL EX. IMPERVIOUS REMOVED	2,626 S.F.	0.060 AC.
PROP. IMPERVIOUS AREA ADDED		
BUILDING	935 S.F.	0.022 AC.
PAVEMENT/WALKS	691 S.F.	0.016 AC.
TOTAL PROP. IMPERVIOUS ADDED	1,572 S.F.	0.036 AC.
TOTAL EX. IMPERVIOUS REMOVED	2,626 S.F.	
TOTAL PROP. IMPERVIOUS ADDED	1,572 S.F.	
DIFFERENCE IN IMPERVIOUS AREA	1,053 S.F.	

LEGEND

—+105—	EXIST. ONE FOOT CONTOUR
—+105	EXIST. GROUND ELEVATION SHOT
—	PROPOSED MITERED END SECTION (PDOT INDEX 272)
—	PROPOSED FLARED END SECTION (PDOT INDEX 270)
—	PROPOSED STORM DRAINAGE INLET
—	PROPOSED STORM DRAINAGE MANHOLE
—	PROPOSED STORM DRAINAGE PIPE
—	PROPOSED FLOW DIRECTION ARROW
—	PROPOSED SWALE LOCATION
—	PROPOSED ELEVATION
—	PROPOSED TOP OF WALK/CURB ELEVATION
—	PROPOSED HOLE OF PAVEMENT ELEVATION
—	GRADE ELEVATION
—	HIGH POINT ELEVATION
—	MANHOLE TOP ELEVATION
—	SWALE ELEVATION
—	EXISTING ELEVATION

EXISTING TREE LEGEND

- ⊕ = BAY TREE
- ⊙ = BOTTLE BRUSH TREE
- ⊗ = CAMPHOR TREE
- ⊘ = CEDAR
- ⊙ = CHINA BERRY TREE
- ⊙ = CITRUS TREE
- ⊙ = OPRESS TREE
- ▽ = ELM TREE
- ⊕ = EUCALYPTUS TREE
- ⊙ = MAGNOLIA TREE
- ⊙ = MAPLE TREE
- ⊙ = WALNUT TREE
- ⊙ = OAK TREE
- ⊙ = OTHER SPECIES
- ⊕ = PALM TREE
- ⊙ = PECAN TREE
- ⊙ = PERSIMMON TREE
- ⊙ = PINE TREE
- ⊙ = SWEETGUM TREE
- ⊙ = WAX MYRTLE TREE
- ⊙ = WILLOW TREE

EXISTING SURVEY LEGEND

- = TOP OF BANK
- = 6" CHAIN LINK FENCE UNLESS OTHERWISE NOTED
- = OVERHEAD UTILITY LINES
- = APPROXIMATE LOCATION OF UNDERGROUND GAS LINE
- = APPROXIMATE LOCATION OF UNDERGROUND FIRE ALARM
- = APPROXIMATE LOCATION OF UNDERGROUND RECLAIMED WATER LINE
- = APPROXIMATE LOCATION OF UNDERGROUND SANITARY SEWER LINE
- = APPROXIMATE LOCATION OF UNDERGROUND STORM SEWER LINE

FOR
Intergra Construction Group
 5300 West Cypress street
 Tampa, Florida 33607
 Telephone No. (813) 286-9860

GRADING PLAN

PATAS MONKEY EXHIBIT
LOWRY PARK ZOO

DATE: 4.28.10
 SCALE: 1"=10'
 DRN. BY: KES
 CHK'D BY: DMV
 PROJ. # 12386-4

Sheet C4

CHARLOTTE ENGINEERING & SURVEYING, INC.
 CIVIL ENGINEERS, SPORT FACILITIES CONSULTANTS &
 LAND DEVELOPMENT CONSULTANTS

Tampa Office
 5410 Mariner Street, Suite 125
 Tampa, FL 33609
 Telephone No. (813) 289-2599
 Fax No. (813) 289-5366
 e-mail: cestampa@verizon.net

EB No. 2904
 LB No. 2904
 LC No. 371

Daniel M. Vicksstrom, P.E.
 P.E. No. 46090
 State of Florida

